

# Product Specifications

## Route Delivery System

### Model 40983 FlashLink BLE Beacon

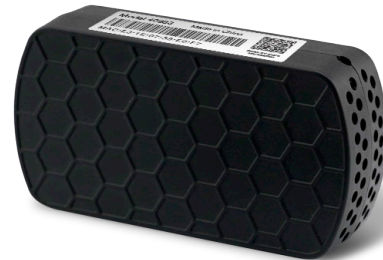
<b>Measurement Range</b>	-40°F to 158°F (-40°C to +70°C)
<b>Temperature Accuracy</b>	±3.6°F from 41°F to 140°F (±2°C from 5°C to 60°C) ±2.5°F From < 41°F or > 140°F (±1.4°C From < 5°C or > 60°C)
<b>Temperature Resolution</b>	0.01°C
<b>Humidity Range</b>	0% RH ~ 100% RH
<b>Humidity Accuracy</b>	± 2% RH from 20% RH to 80% RH ±3.5% RH from <20% RH or >80% RH
<b>Advertising Interval</b>	10 seconds
<b>Transmit Range</b>	490ft (150 meters) in open area
<b>Dimensions</b>	2.95in x 1.49in x 0.75in (75mm x 38mm x 19mm)
<b>Weight</b>	1.7oz (48g)
<b>Battery</b>	Lithium Battery
<b>Shelf Life</b>	3 years
<b>Waterproof Rating</b>	IP66
<b>Installation</b>	Double Sided Adhesive
<b>BLE Version</b>	BLE 5.1

### Model 40992 FlashLink BLE Mobile Gateway

<b>Operating Range</b>	-22°F to +158°F (-30°C to +70°C)
<b>Power Source</b>	8V to 32V DC
<b>Backup Battery</b>	Nickel-Metal Hydride battery
<b>Dimensions</b>	5.30in x 2.66in x 0.58in (134.6mm x 67.5mm x 14.8mm) Battery contacts attached to 2-meter cable
<b>Weight</b>	4.59oz (130 grams)
<b>Casing</b>	PC and ABS
<b>Storage Conditions</b>	-40°F to 158°F (-40°C to +70°C)
<b>Waterproof Rating</b>	IP67
<b>Certification</b>	CE / FCC
<b>Bluetooth</b>	5.2
<b>Cellular</b>	LTE Cat M1/NB2
<b>GSM</b>	Cellular and GPS
<b>Constellation Support</b>	GPS, Glonass, Galileo, Beidou
<b>Position Accuracy</b>	Less than 6.6 ft (2m)



Model 40992 Mobile Gateway



Model 40983 BLE Beacon

### Model 41015

#### FlashLink BLE Temperature and Humidity Beacon

- Tracks environmental conditions inside containers during shipment
- Wirelessly transmits data by Bluetooth to a Gateway device
- Temperature and Humidity data stored on the FlashTrak web portal
- Easy installation with double sided adhesive

#### FlashLink BLE Mobile Gateway

- Data automatically uploaded to FlashTrak
- Cellular and GPS location positioning
- Powered by DC connection to vehicle or trailer battery
- Monitors location and receives data from BLE Devices

DeltaTrak manufactures and operates under an ISO 9001:2015 registered quality management system

SS 41015 2311

